

STANDARD SERIES

NEUTRALS

**N**  
Natural



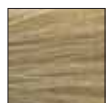
11N



10N



9N



8N



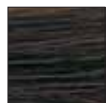
7N



6N



5N



4N



3N



2N



1N

COOLS

**A**  
Ash

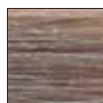


11A

**AA**  
Double Ash



9A



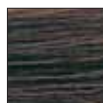
8A



7A



6A



5A



4A

**B**  
Beige



**I**  
Iridescent



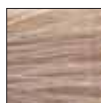
11I



10B



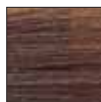
9I



8B



7I



6B

WARMS

**W**  
Warm



11W



**G**  
Gold



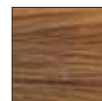
10G



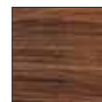
9G



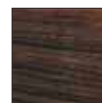
8G



7G



6G



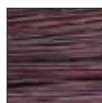
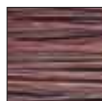
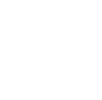
5G

**RB**  
Red Brown  
Blonde



4RB

**CM**  
Chocolate  
Mocha



4CM

**CHI IONIC**  
PERMANENT SHINE  
HAIR COLOR



## STANDARD SERIES

### REDS

**CG**  
Copper Gold

**C**  
Copper

**RR**  
Red Red

**RV**  
Red Violet



9CG



8CG



8C



8RR



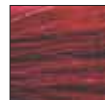
8RV



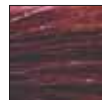
7CG



7C



7RR



7RV



6C



6RR



6RV



5CG



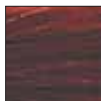
5C



5RR



5RV



4C



4RR



4RV

### COLOR ADDITIVES

Up to 1-2 inches per ounce of color

FOR LIGHTER LEVELS

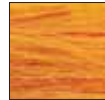


Beige



Ash

FOR MEDIUM LEVELS



Gold

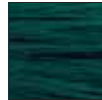


Orange



Red

FOR DARKER LEVELS



Double Ash



Violet



Blue

## ULP-13 ULTRA LIGHT PALE BLONDE SERIES



ULP-13N



ULP-13B



ULP-13A

- Recommended for levels 6 and lighter.
- Ideal for fine texture and easy to lighten hair.
- Less cool tones = maximum lift

## UL-12 ULTRA LIGHT BLONDE SERIES



UL-12N



UL-12I



UL-12A

- Recommended for levels 5,6,7 & 8.
- Ideal for coarse and resistant to lighten hair.
- More cool tones = neutralizes more warm tones

## COVERAGE PLUS NATURALS



50-10N



50-9N



50-8N



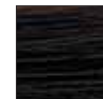
50-7N



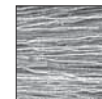
50-6N



50-5N



50-4N

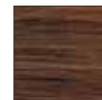


50% Grey

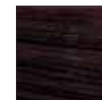
## COVERAGE PLUS NATURAL WARMS



50-8W



50-6W

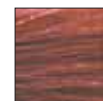


50-4W

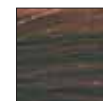
## COVERAGE PLUS NATURAL REDS



50-9R



50-7R



50-5R



50-3R